




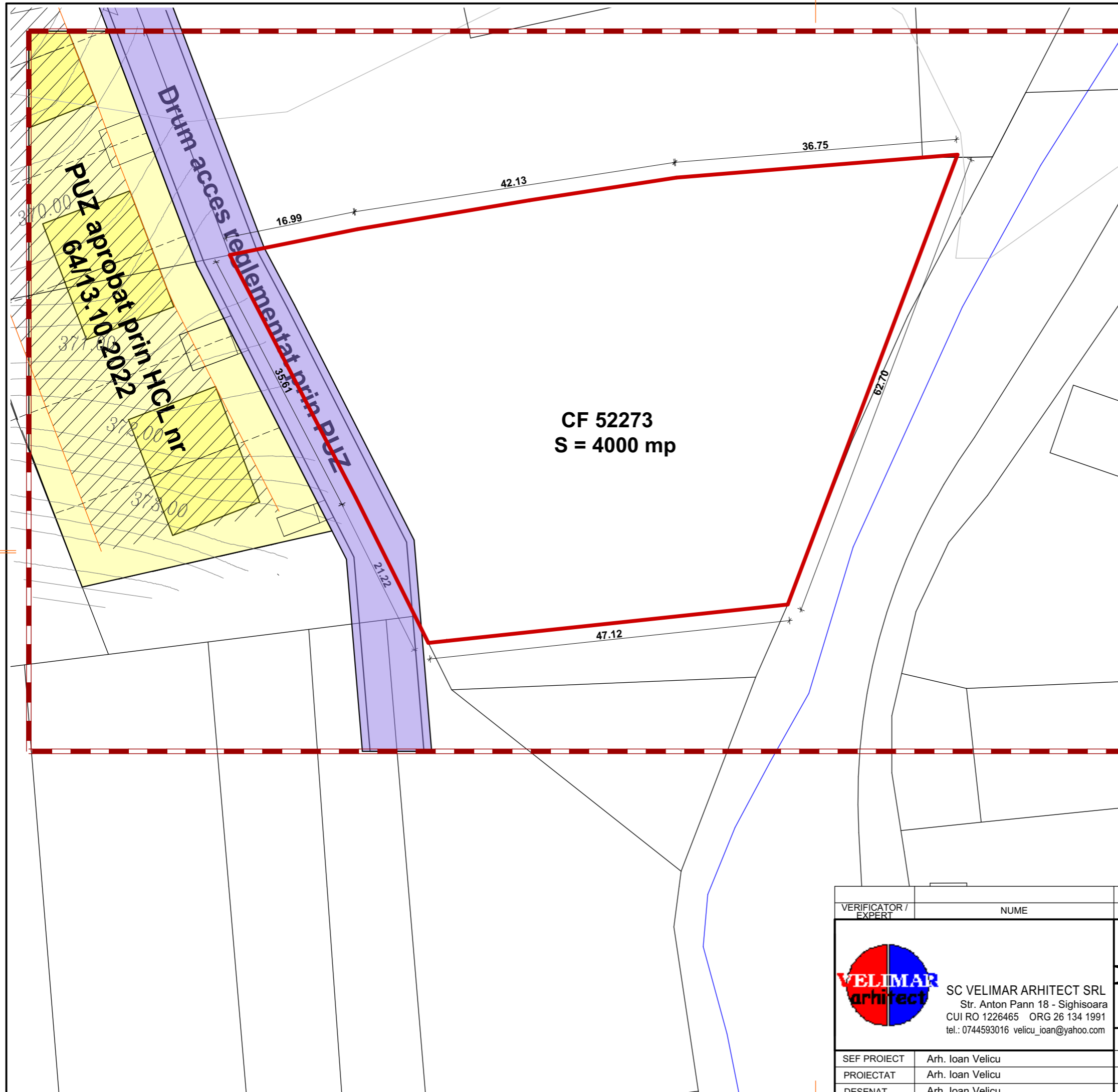


PUZ PENTRU RECONVERSIE FUNCTIONALA DIN ZONA MIXTA (ISP SI UID) IN ZONA PENTRU LOCUINTE SI FUNCTIUNI COMPLEMENTARE (LFC)

LEGENDA

LIMITE

-  Limita teren ce a generat PUZ
-  Limita zonei studiate
-  Parcelare existenta
-  PUZ aprobat prin HCL nr 64/13.10.2022
-  Drum acces reglementat prin PUZ

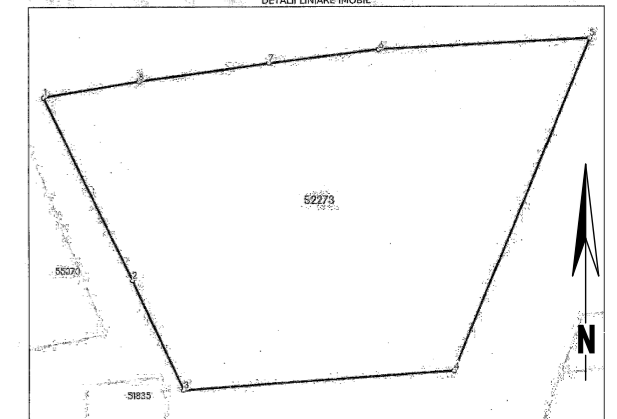


Carte Funciara Nr. 52273 Comuna/Oraş/Municipiu: Albesti
Anexa Nr. 1 La Partea I

Nr cadastral	Suprafata (mp)	Observatii / Referinte
52273	4.000	

* Suprafata este determinata in planul de proiectie Stereo 70.


DETALII LINIARE IMOBIL



Nr. Gr.	Categorie folosinta	Intra vilan	Suprafata (mp)	Tarla	Parcela	Nr. topo	Observatii / Referinte
1	arabil	NU	4.000				

Lungime Segmente
1) Valorile lungimilor segmentelor sunt obtinute din proiectie in plan.

Punct Inceput	Punct sfarsit	Lungime segment (m)
1	2	35.609
2	3	21.218
3	4	47.228
4	5	62.794
5	6	36.753
6	7	19.387

VERIFICATOR / EXPERT	NUME	SEMNATURA	CERINTA	REFERAT / EXPERTIZA NR. / DATA
	SC VELIMAR ARHITECT SRL Str. Anton Pann 18 - Sighisoara CUI RO 1226465 ORG 26 134 1991 tel.: 0744593016 velicu_ioan@yahoo.com	RECONVERSIE FUNCTIONALA DIN ISP SI UID IN ZONA LOCUINTE SI FUNCTIUNI COMPLEMENTARE (LFC)		
		ARHITECTURA	REZISTENTA	SANITARE
SEMNATURA	SCARA 1 : 500	BENEFICIAR: STROIAN STEFAN LEONE		Numar proiect: 75/2022 SPECIALITATE Faza: P.U.Z. Nr.plansa: U-02 Revizuit 0
SEF PROIECT	Arh. Ioan Velicu	noiembrie 2022	com. ALBESTI, sat. ALBESTI, f.nr., jud. MURES	0